



**CBM GLOBAL.IO**

**Official Presentation**

Valid from May 1, 2018 till June 1, 2018

For updates please visit us at [www.cbmglobal.io](http://www.cbmglobal.io)

- ▶ **Early bird launch**
- ▶ **Discount license**
- First Run**
- Full Payment**
- Incubator**
- First Payout**
- Full Launch**

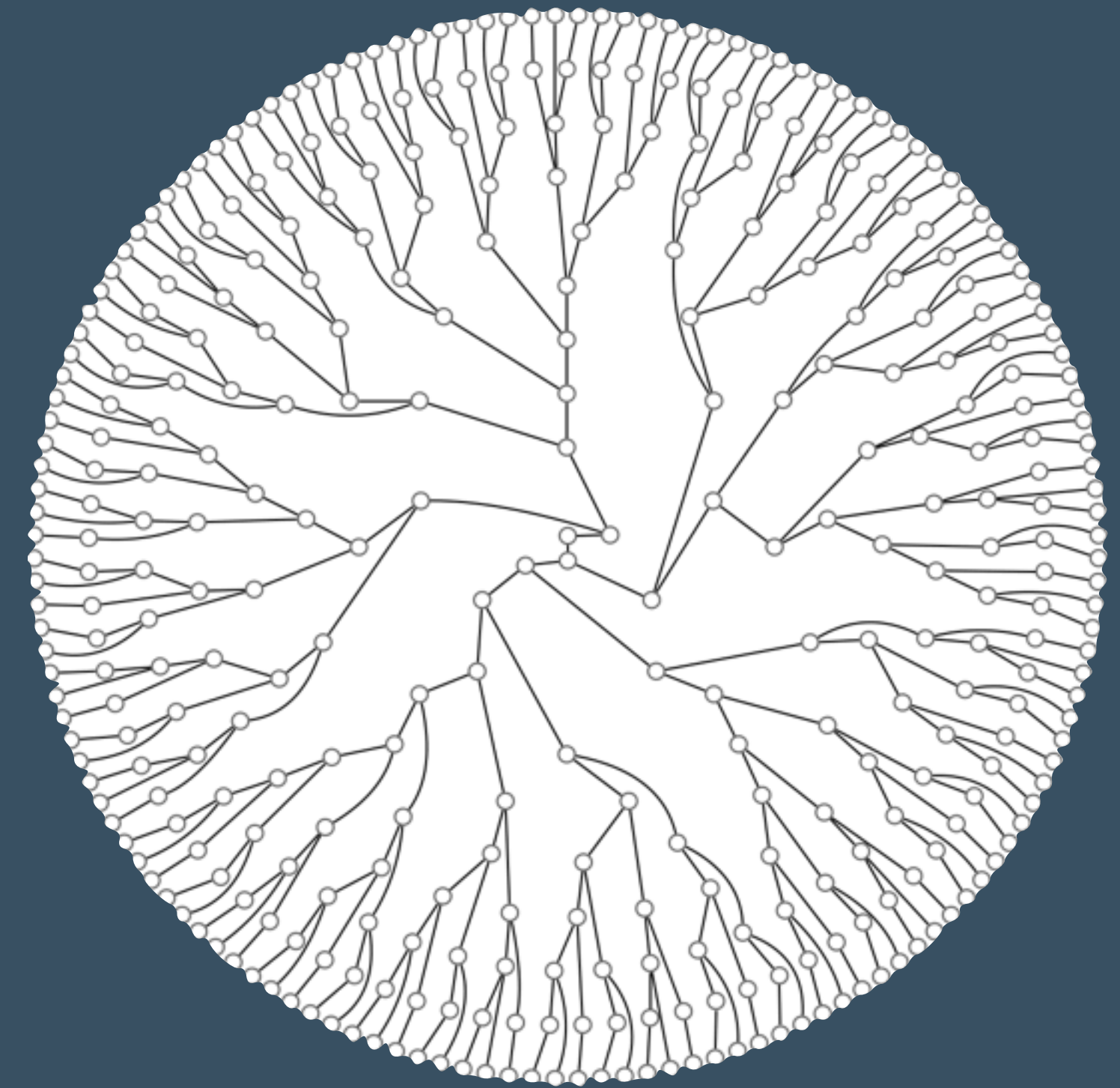
# ABOUT CBM GLOBAL

Opportunities don't  
happen  
**You create them**

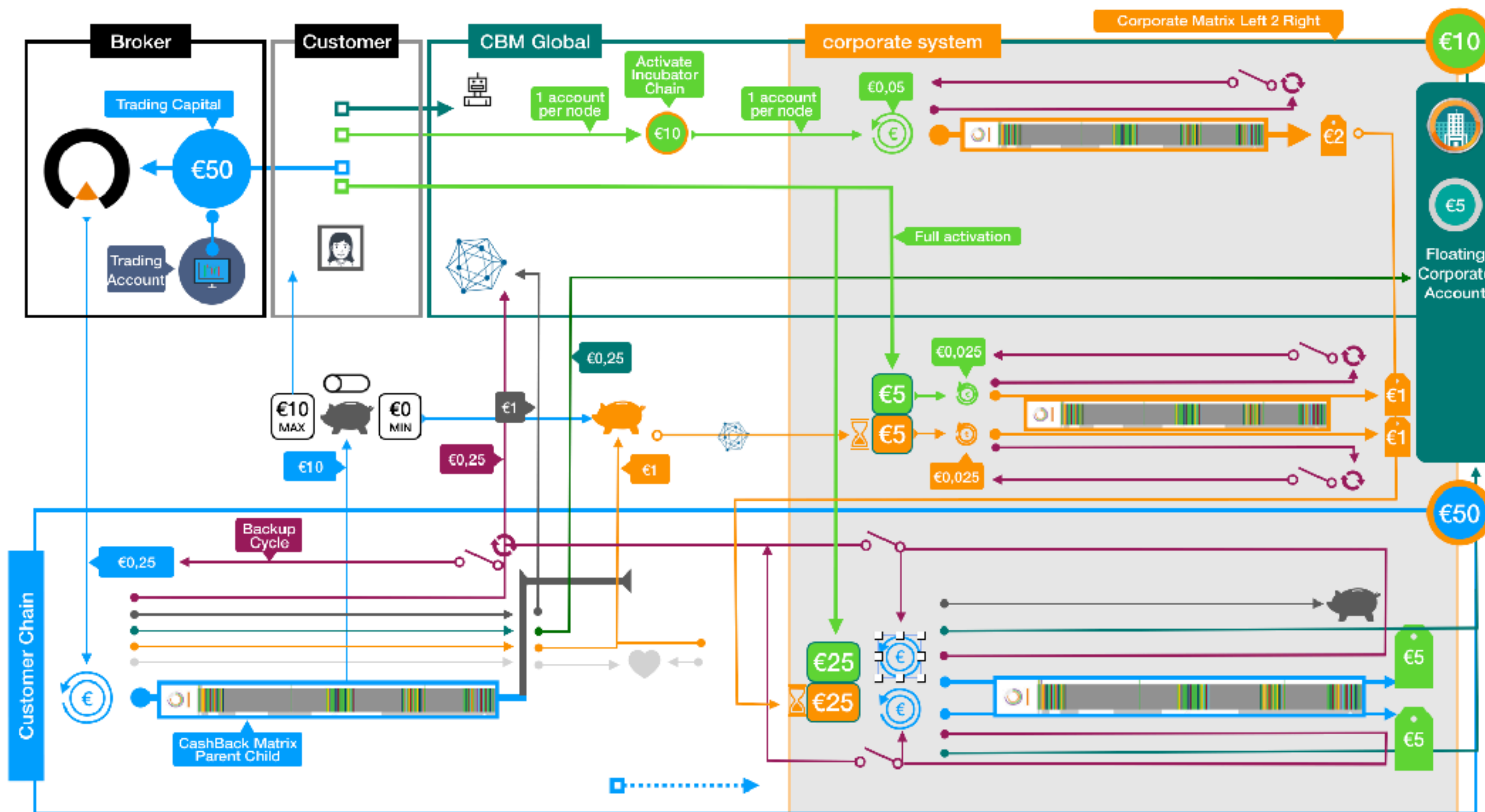


Let your money work for you.

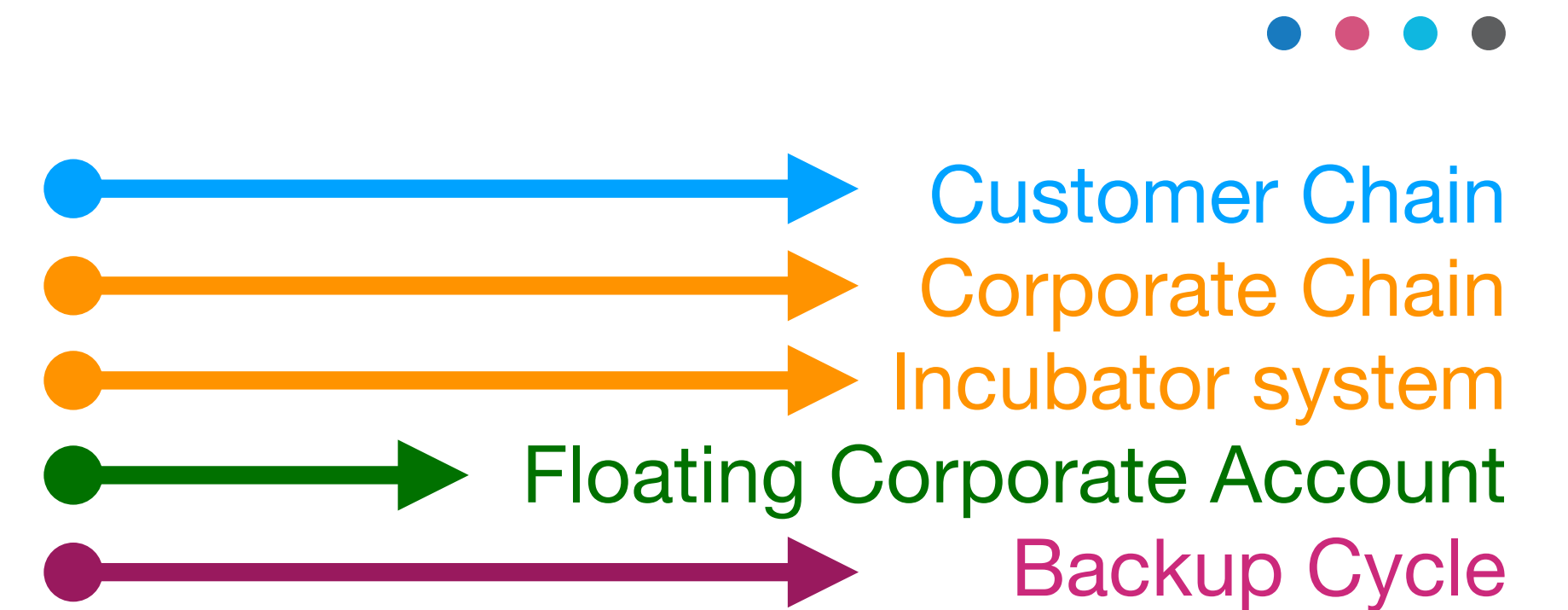
Take advantage of the power of **COMPOUNDING**



# COMPLEXITY MAKES IT SIMPLE



You participate  
We do the rest



All completely automated  
for a sustainable stream of income



**CBM GLOBAL.IO**

**EXPLAINED**

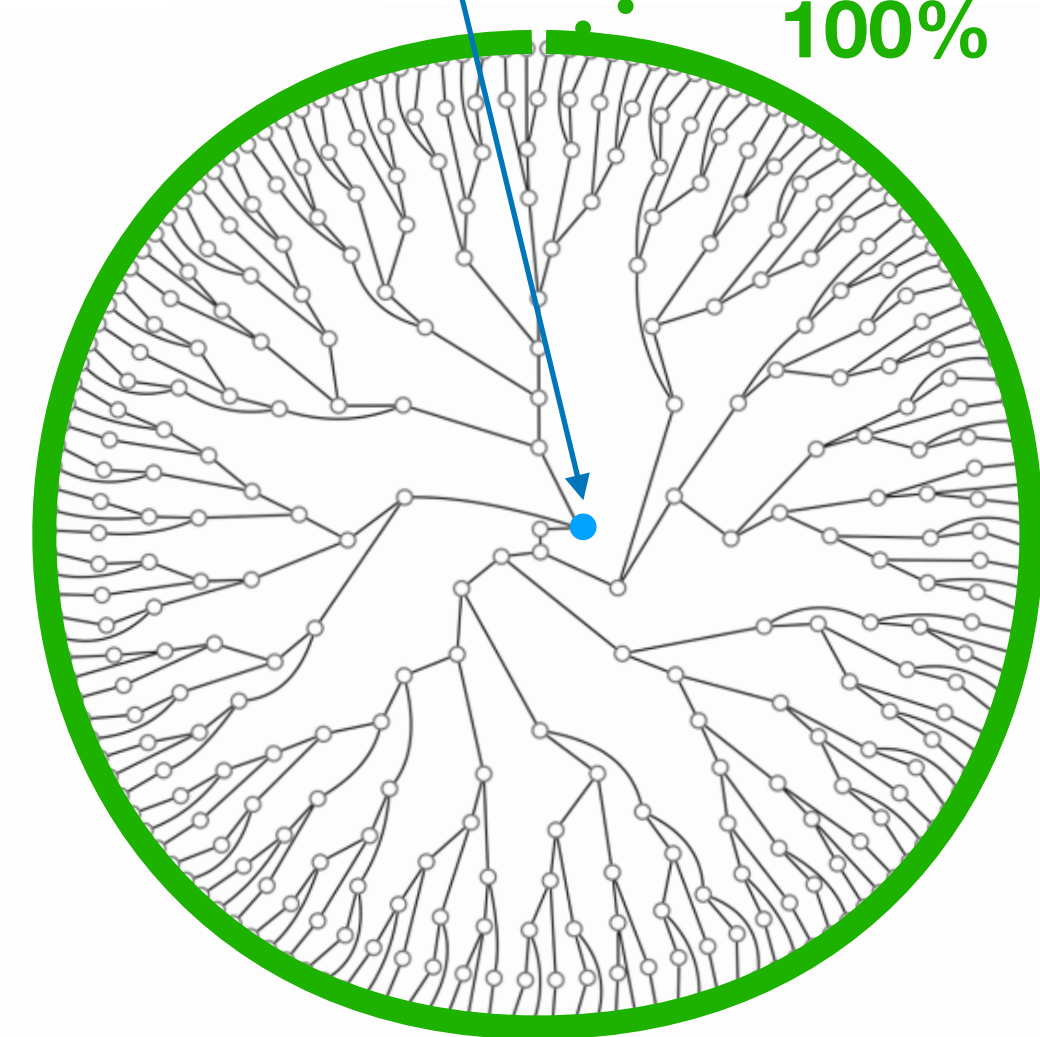


Monthly Rebates



Monthly Payout

100%



# THE CUSTOMER CHAIN

## Trading capital

Your personal trading capital is deposited with our partner broker

## Monthly commercials

CBM is commissioned every month for commercial activities on your trading account

## CBM Global Grid

CBM provides a cashback to its clients by placing the capital in the cashback grid divided in €50/Node

## Grid fill-up

Other CBM client's capital is also placed in the same global grid.

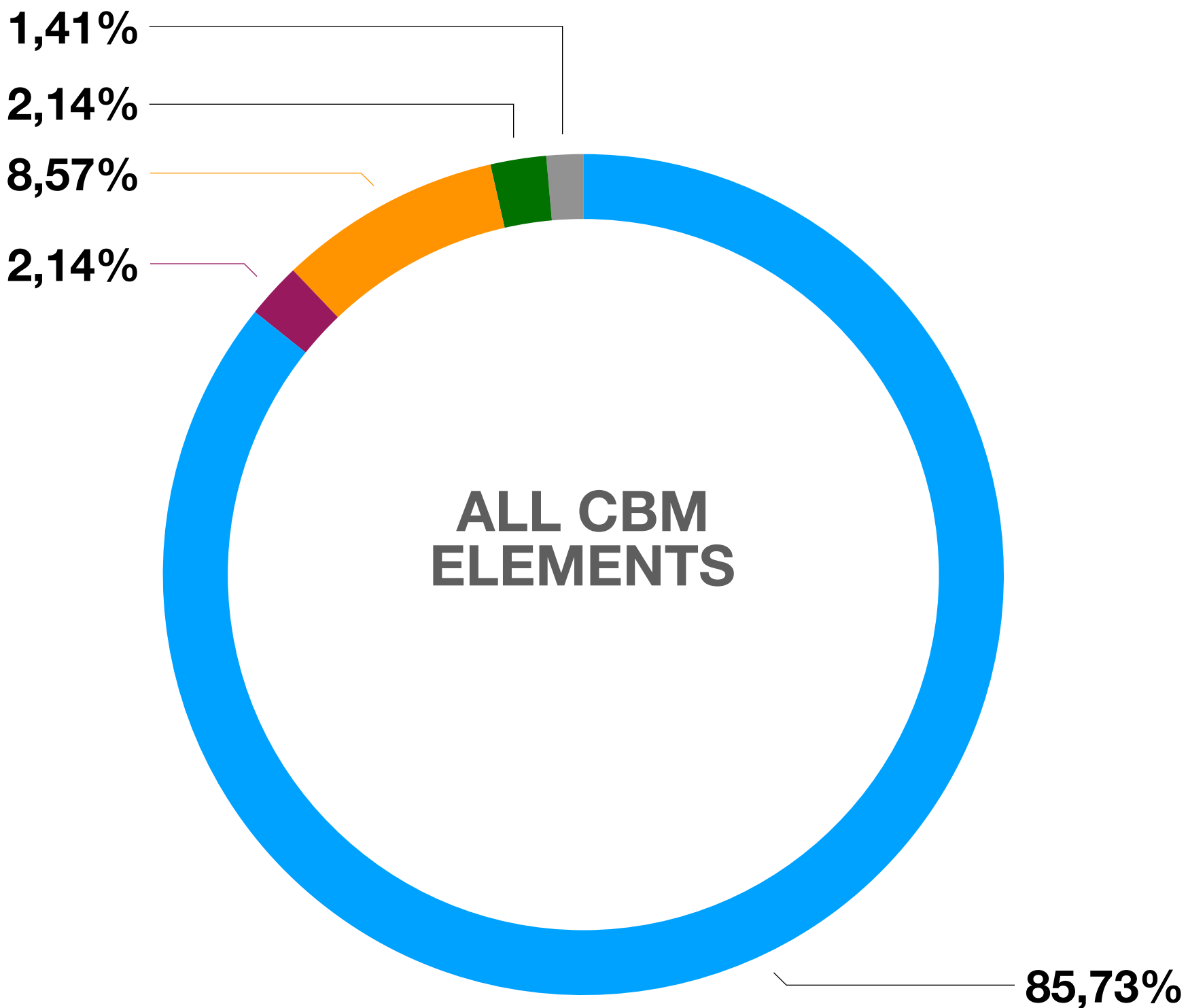
## Earnings






If your personal grid is filled, your node can yield up to a maximum of €10 per month.

# Sustainability is key



A complex and diverse system is set to ensure long-term stability.  
No need for taking risks in trading. We've got it covered



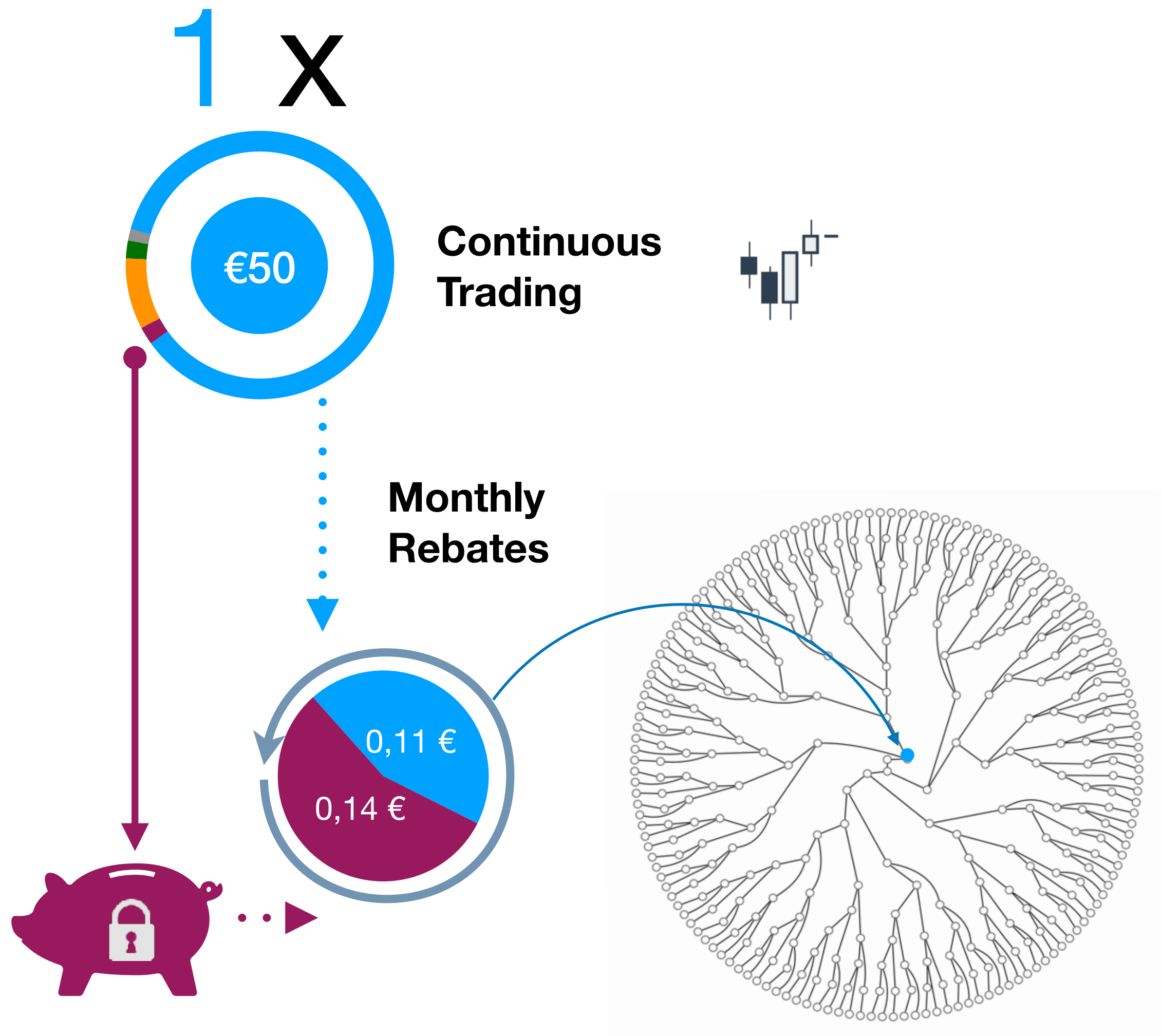
-  CashBack earnings
-  Backup cycle
-  Incubator Chain Upcycling
-  Floating Corporate Account
-  FAN/GPA

**WHAT IF !**

**TRADING DOESN'T PRODUCE ENOUGH VOLUME**



# THE BACKUP CYCLE



## Backup cycle

2,1432% of the cashback amount is allocated to the backup cycle holding wallet.

## Activating the backup cycle

If the node can not completely be filled with cashback in a certain month, the fill-up can be assisted with funds held in the backup cycle until empty.

## Savings Cap

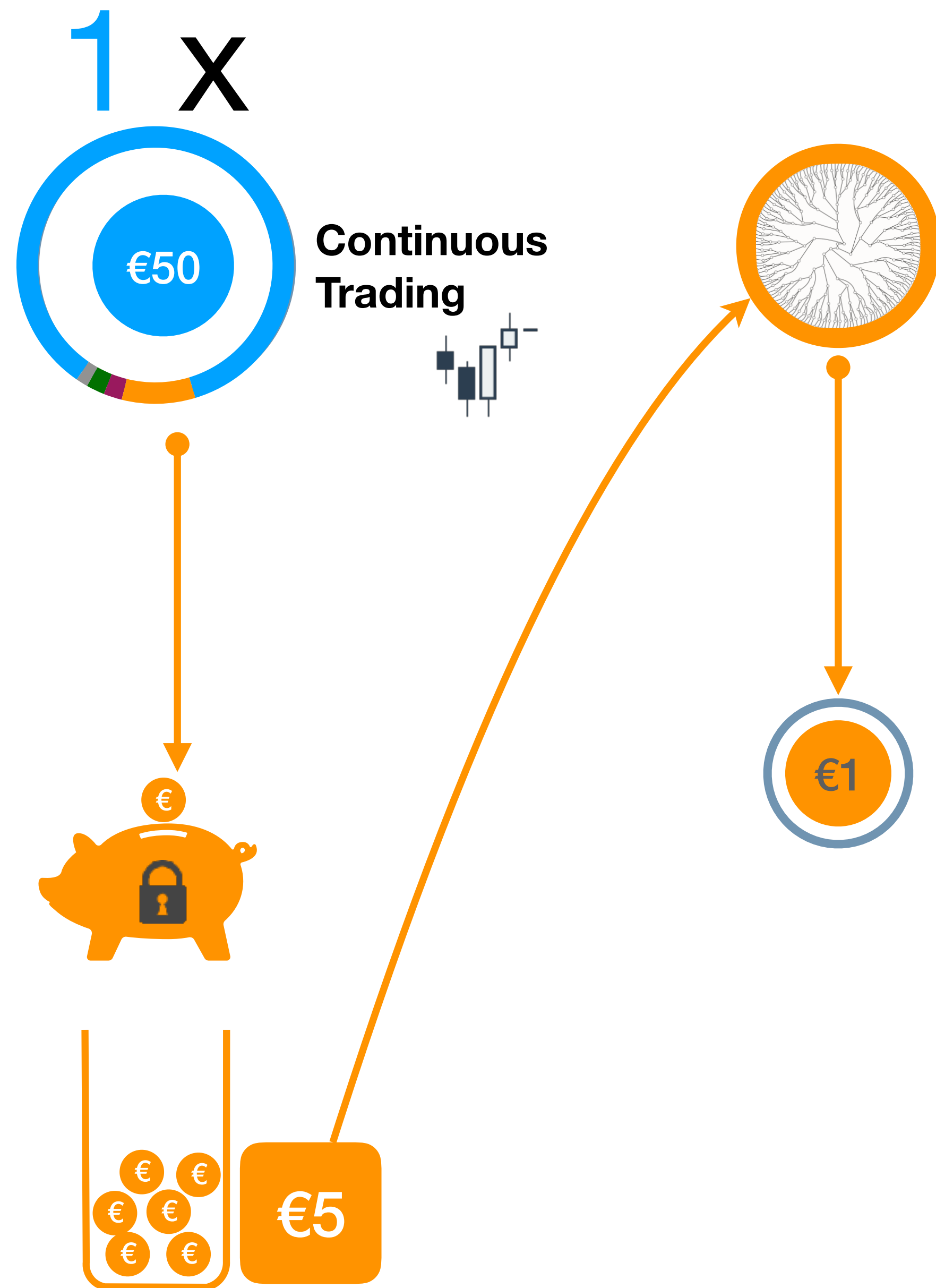
The savings for the backup cycle wallet are capped at €3 maximum savings per active node. A node is active when the corresponding trading capital is being actively traded.



**DOES THE SYSTEM RELY ONLY ON TRADING?**

**NO, WE'VE ACTIVATED THE COMMISSIONS**





# INCUBATOR CHAIN 10

The incubator chain is a corporate system. It activates a part of the corporate earnings to allow your account to be supported by a up-cycle account

## The incubator chain €10

8,75365% of the cashback is allocated to the up-cycle wallet.

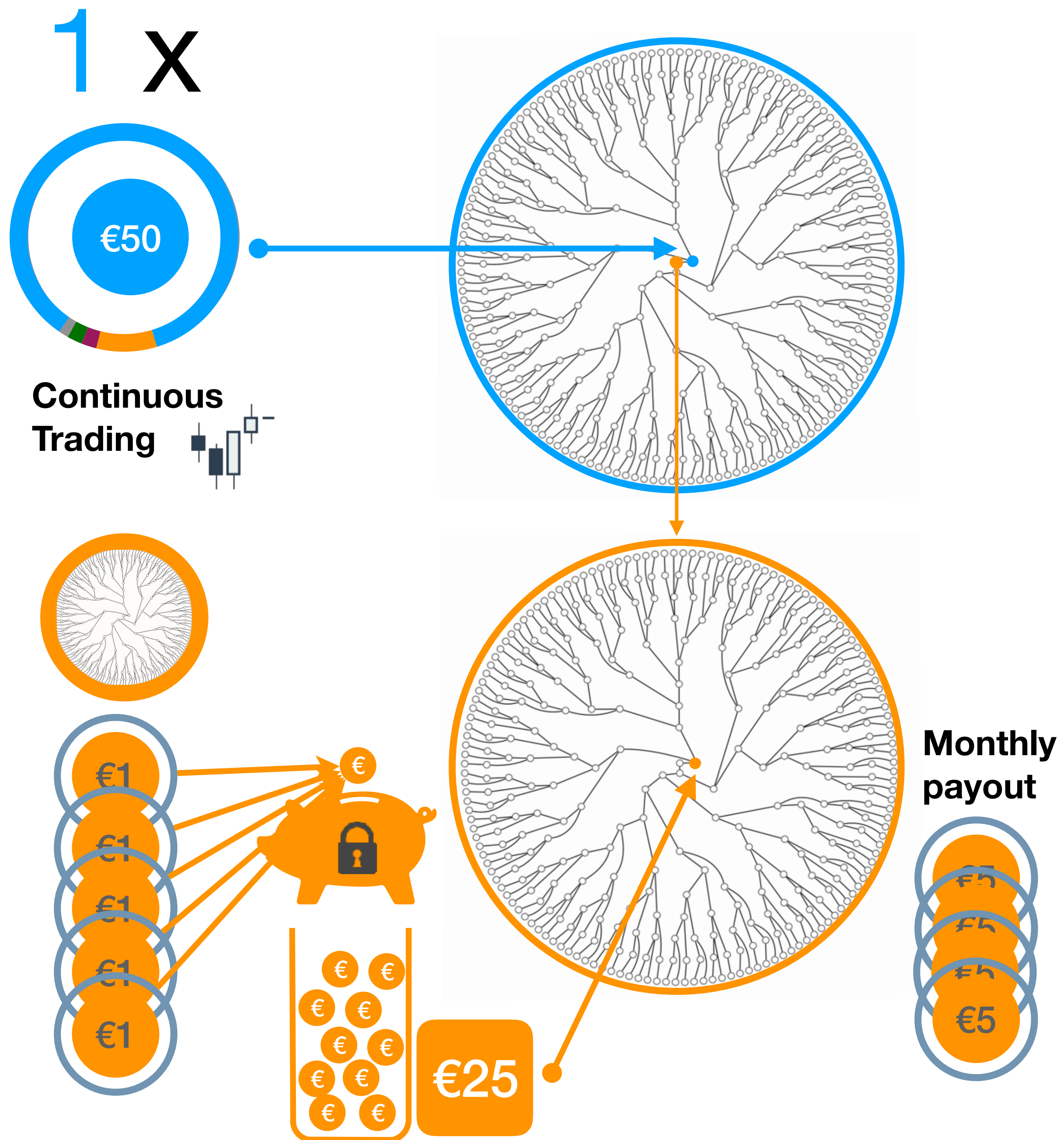
All €50 nodes in your name save in the same wallet.

## The €5 threshold

Every time the consolidated amount in the wallet reaches a level of €5, an up-cycle node is created in the corporate system.

## No-payout rule

The €1 yield per month when that up-cycle node's grid is full is not applicable for payout but is saved in the up-cycle wallet for €25 positions.



# INCUBATOR CHAIN 50



## 10 to 50 up-cycle

The cashback commissions out of the Incubator Chain 10 are saved in the Incubator Chain 50 for each €25 saved.

## Placement inside the customer chain

All €25 positions are positioned in the CBM grid of the originating client.

## Yield

Earnings on incubator chain positions are capped to a maximum of €5 per node when completely filled

**AND YOU CAN DOUBLE UP ON IT**

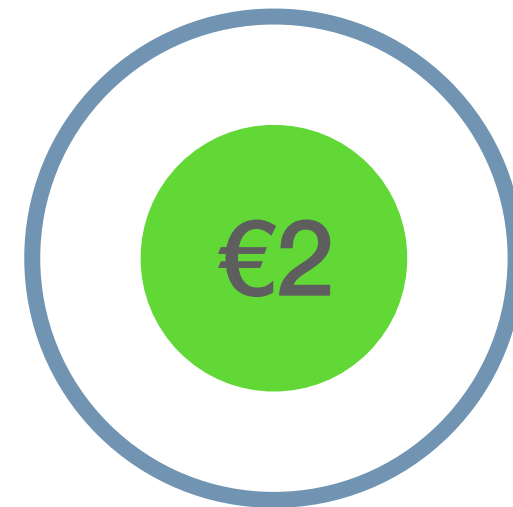
**ACTIVATE THE FULL INCUBATOR CHAIN**



# INCUBATOR CHAIN



## INCUBATOR LICENSE



Buying the incubator license for €5 nodes or the €25 nodes, will effectively double the earnings on those node.

### Incubator license 10

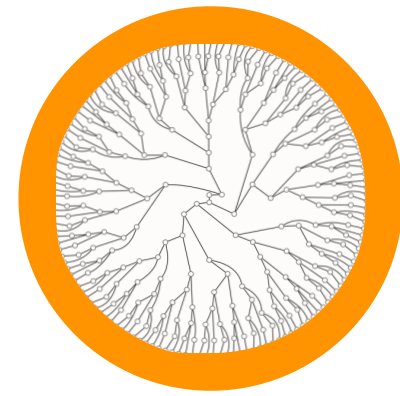
For each incubator 10 node created, the client has the OPTION to activate the full potential by buying an incubator license for a single node. This effectively doubles the earnings on that node.

### Incubator license 50

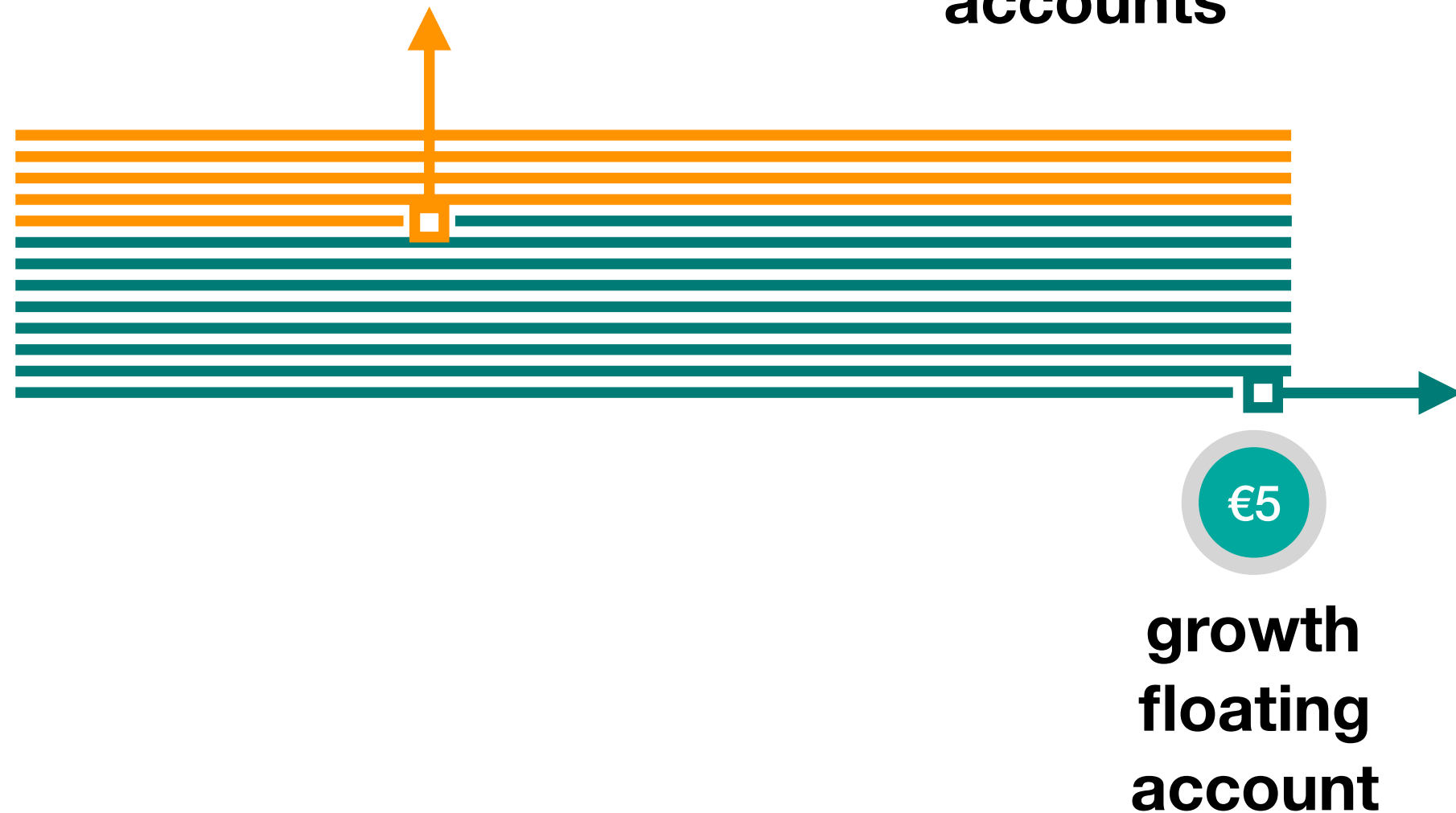
For each incubator 50 node created, the client has the OPTION to activate the full potential by buying an incubator license for a single node. This effectively doubles the earnings on that node.

**EVEN THE COMPANY**

**IS INVESTING IN YOU**



**NEW €5/€10  
accounts**



**WE ASSIST IN THE FILL UP OF  
THE €10 INCUBATOR CHAIN**

# FLOATING CORPORATE ACCOUNT



Corporate even helps where it effects the most,..  
in the incubator chain.

## Corporate assistance

All up-cycle accounts are places sequentially in the incubator grid. Corporate assists with a floating account that always “sinks to the bottom” so to say.

## €5 accounts

These nodes have a €5 trading capital generating commissions. The number of accounts can contract and expand based on the performance of the trading.



**CBM GLOBAL.IO**

**Official Presentation**

**Valid from May 1, 2018 till June 1, 2018**

For updates please visit us at [www.cbmglobal.io](http://www.cbmglobal.io)

**Early bird launch  
Discount license**